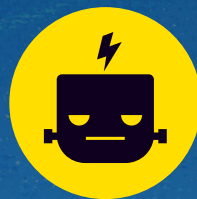


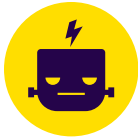
2.0 UPDATE!



DRY BRUSHES COLLECTION

NOMAD





NOMAD 2 FOR PROCREATE

BRUSHES GUIDE

FTOON - Carpenter's Pencil (2.0)
Formerly: Sketch Pencil



UPDATED!

FTOON - Detail Gouache (2.0)



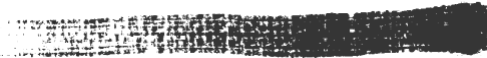
UPDATED!

FTOON - Classic Gouache



NEW!

FTOON - Castilla
Formerly: Dry Gouache 2



UPDATED!

FTOON - Moderna



NEW!

FTOON - Cheapest Pigmento



NEW!

FTOON - Fuzzy Detail



NEW!

FTOON - Greasy Texture



NEW!

FTOON - Rebel

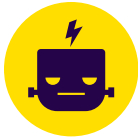


NEW!

FTOON - Greasy Gouache (2.0)



UPDATED!



NOMAD 2 FOR PROCREATE

BRUSHES GUIDE

FTOON - Two Bucks Round



NEW!

FTOON - Poster Paint (2.0)

Formerly: Dry Gouache



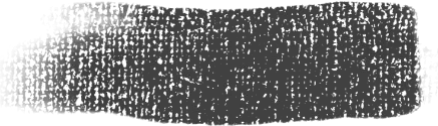
UPDATED!

FTOON - Roller 3/5



NEW!

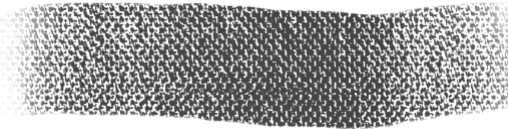
FTOON - Roller A



NEW!

FTOON - Roller B

Formerly: Clean Roller



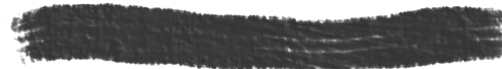
UPDATED!

FTOON - Grasso



NEW!

FTOON - Square Bristle (2.0)



UPDATED!

FTOON - Worn Filbert

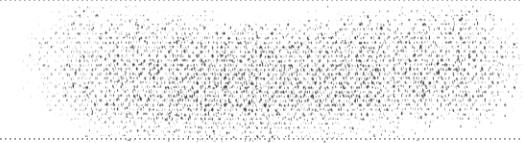
Formerly: Furry Bristle



UPDATED!

FTOON - Cotton Paper (2.0)

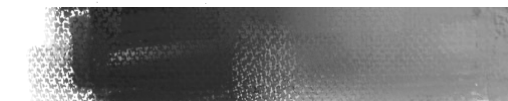
Formerly: Graphite Powder



UPDATED!

FTOON - Flat Blender (Colorless)

Formerly: Flat Blend (Smudge)



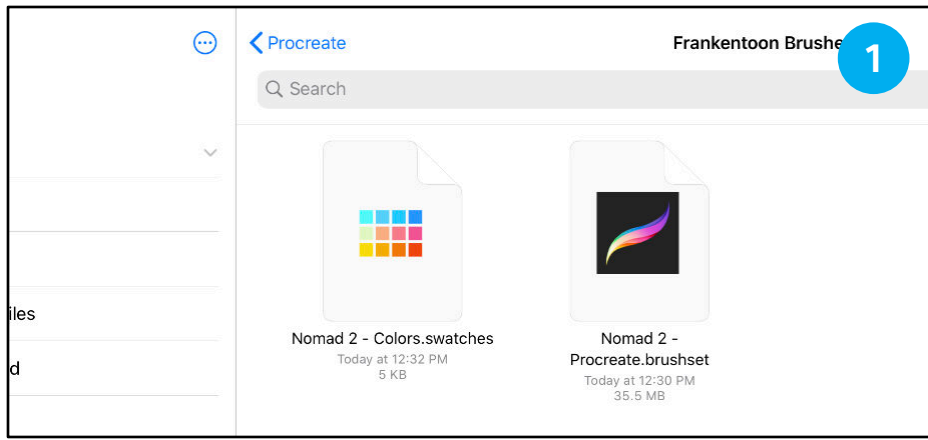
UPDATED!



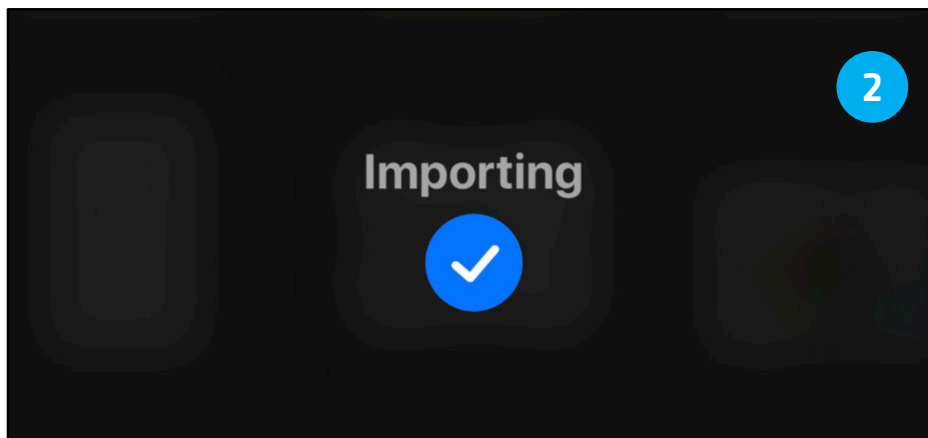
NOMAD 2 FOR PROCREATE

INSTALLATION

Installing Local Files

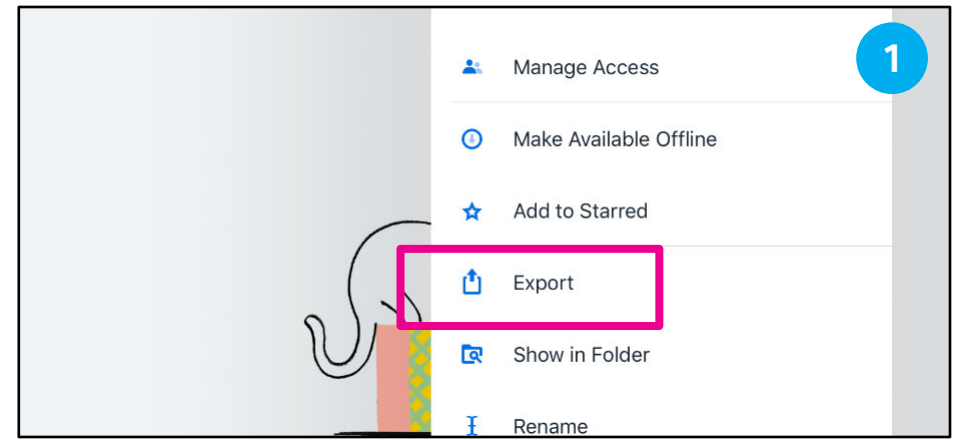


First, locate your downloaded files. In this case I have them stored locally. You can also use **iCloud**, **Dropbox** or any other file manager. It doesn't really matter.

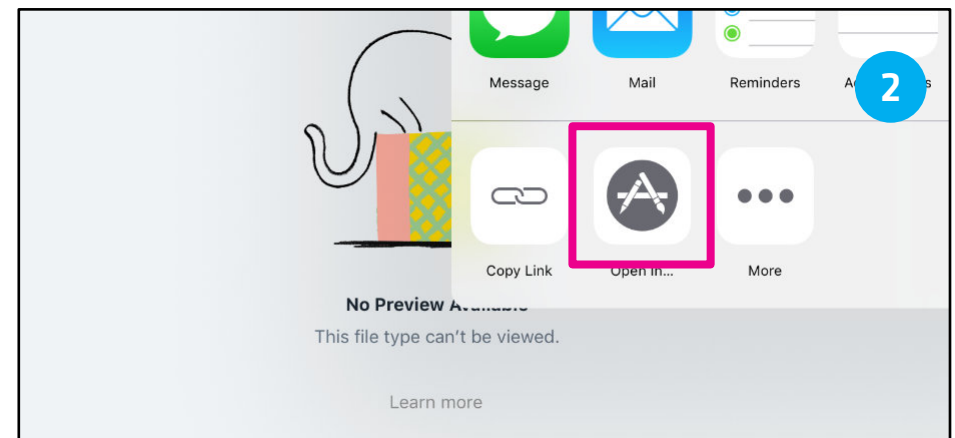


If you have your **.brushset** file in your iPad local folder, you just need tap the file and it will be installed automatically.

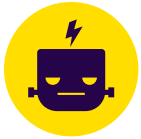
Installing Files from the Cloud



If you have saved your installation files in **Dropbox**, you need to select the **Nomad 2 - Procreate.brushset** file and then, tap the **Export** option.

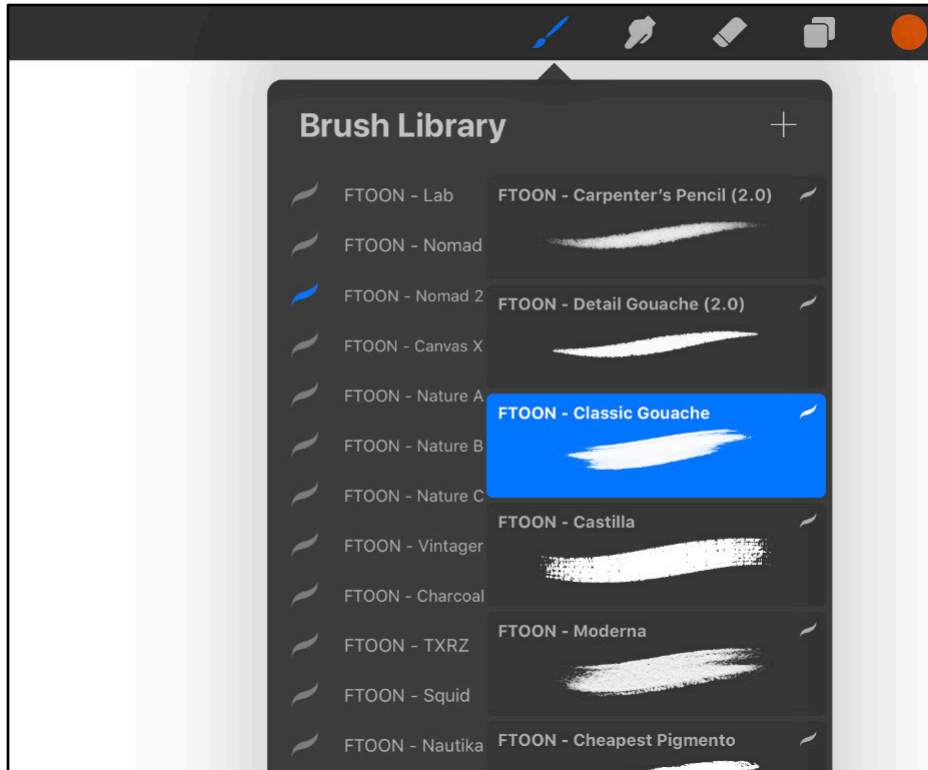


Then, select the **Open In...** button and choose **Procreate** from that menu.

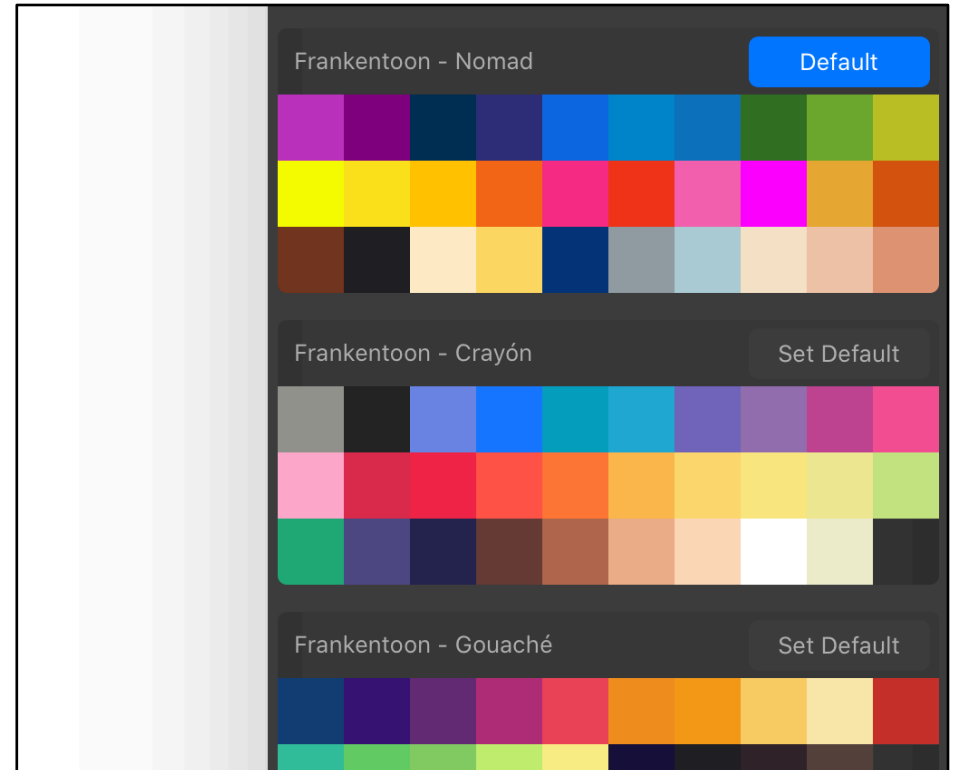


NOMAD 2 FOR PROCREATE

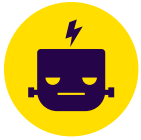
INSTALLATION



Your **Nomad 2** Brushes should now appear in your **Brush Library**.



Rinse and repeat to import the **Nomad** Swatches library.



Mix and Match!

Here's a quick deconstruction of an Illustration made with **Nomad 2** brushes.

These are just a couple of ideas on how to use some of these tools. The more you paint with them, the more uses you'll find for each one.

FTOON - Grasso

Works fantastic for painting groovy details or fills.

FTOON - Detail Gouache (2.0)

Create shaky lines and final small details.

FTOON - Greasy Texture

Use this one here to add extra grainy details.

FTOON - Poster Paint (2.0)

This one creates uneven and grainy fills.

FTOON - Classic Gouache

Create distressed shapes.

FTOON - Two Bucks Round

Organic and uneven strokes.

FTOON - Worn Filbert

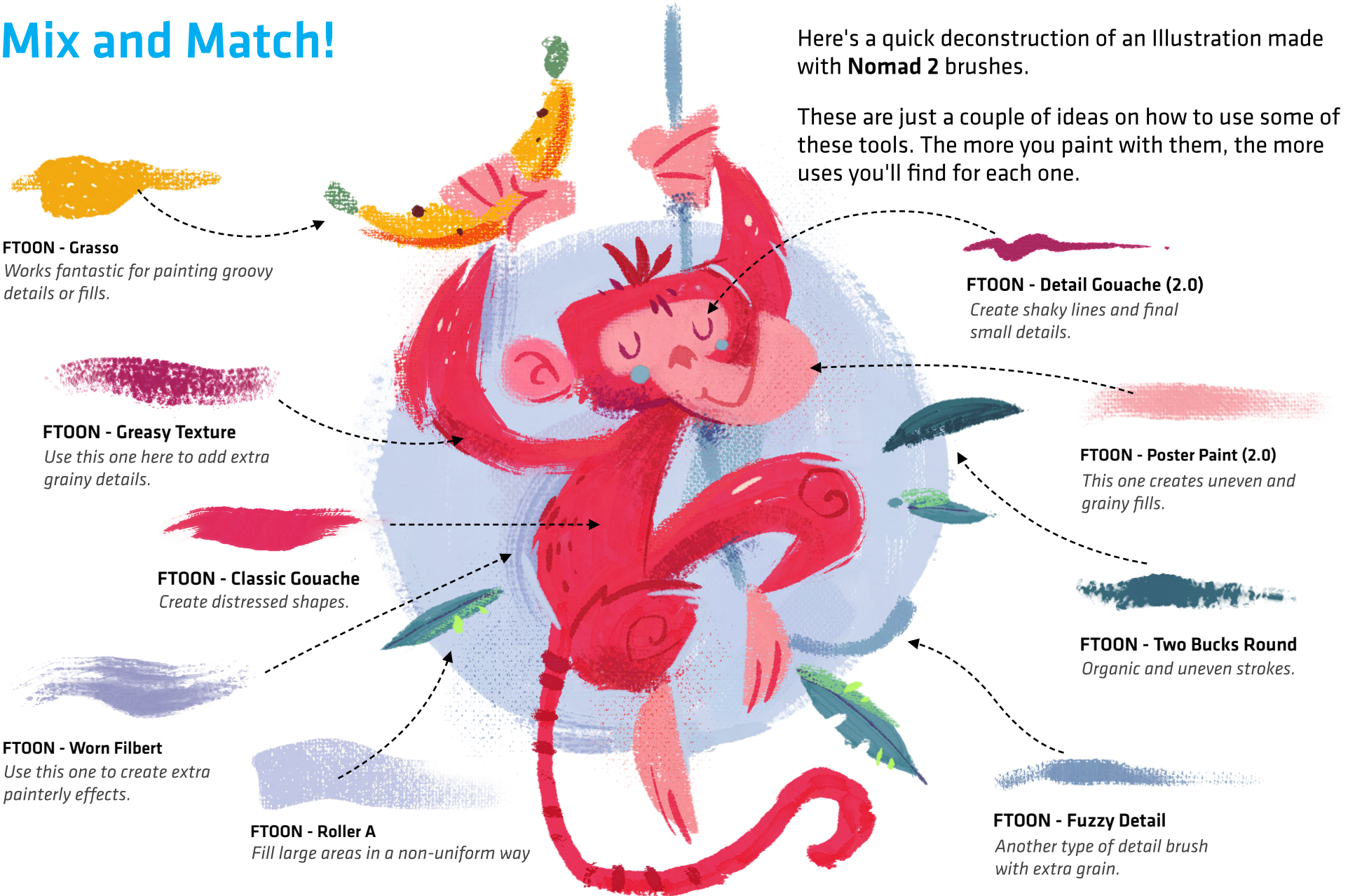
Use this one to create extra painterly effects.

FTOON - Roller A

Fill large areas in a non-uniform way

FTOON - Fuzzy Detail

Another type of detail brush with extra grain.





Unpredictable Textures

Taking advantage of the latest **Procreate's** engine, we've designed some brushes that will produce beautiful procedural textures. Depending on how you apply pressure and change stroke's velocity with your **Apple Pencil**, these brushes will make

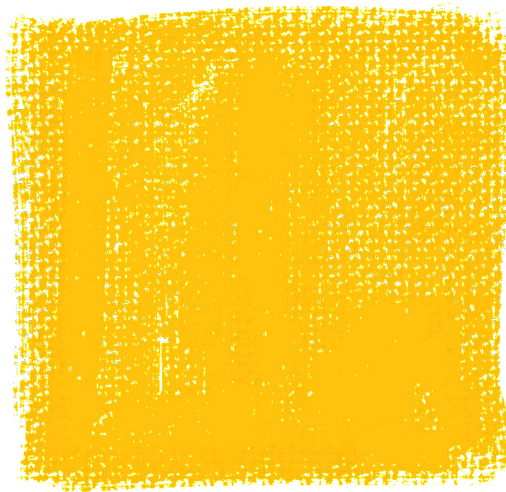
you feel as if you were using actual dry paint over your **iPad's** screen. Being a little bit out of control, could be a good thing for your art. From subtle painterly textures to more extreme toothy surfaces, let yourself be delighted by some delicious chaos.

Let's see some examples:

Take a couple of minutes to experiment with each brush and see how it behaves using gentle up-down strokes; what happens when you paint without lifting your stylus, or how it looks when you dab a bunch of short layered strokes, etc.



FTOON - Classic Gouache



FTOON - Grasso



FTOON - Poster Paint (2.0)



FTOON - Two Bucks Round



FTOON - Square Bristle (2.0)

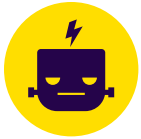


FTOON - Greasy Texture

Another fun thing about the new **Nomad 2** is the way each brush reacts to the same color. You'd want to experiment and see how the color changes as you paint away. This feature will add an extra organic feel to your paintings.

Also, even with the same brush, some colors may show certain textures that others won't. Like with actual gouache paint; colors such as yellow and red, will rarely give you any trouble when painting flat shapes. On the other hand, Emerald Green and Violet, to mention a couple, will show a kind of 'veined' finish 90 percent of the time.

Digital colors behave differently, but either way, you'll find several variations depending on the colors you've chosen. Now, add the rest of the dynamics we've seen before, and you'll have tons of options to play with. Way cool, huh?



Less is More Challenge

No matter how many tools you may have at your disposal, if you don't get to know them well, you'll end up missing their full potential every time. So, here's a nice challenge to get started.

FTOON - Roller A



FTOON - Two Bucks Round

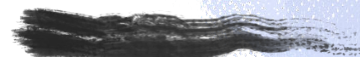


FTOON - Detail Gouache (2.0)



Choose three (up to four) brushes and create simple paintings with them. Try solving shapes and shading using only these brushes. This way you'll know their strengths and limitations.

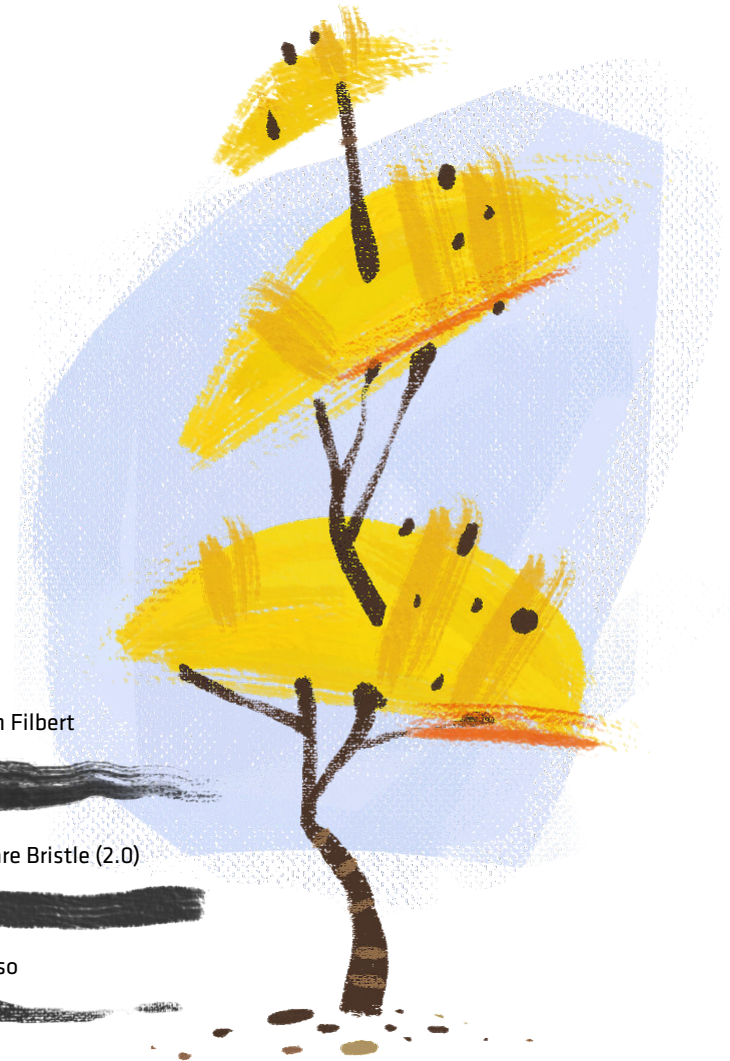
FTOON - Worn Filbert



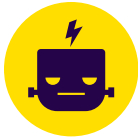
FTOON - Square Bristle (2.0)



FTOON - Grasso



Try different strokes and vary the pressure, to see the full painting range of each brush first-hand. Use the same brushes for a couple of days to have the hang of each one of them. You'll be amazed by what you can achieve with this challenge.



Nomad 2 for Procreate - End User License

Attribution-NonCommercial 4.0 CC applies to the brush set kit as a product. However, users are free to create personal and commercial products with this product without attribution.

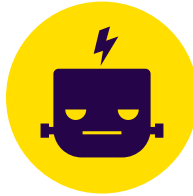
You MAY use Nomad 2 for Procreate:

- For unlimited personal projects.
- For unlimited commercial projects for yourself or a client: As long as the parts of the **Nomad 2 for Procreate**, modified or in original form, aren't available in a distributable form on its own.
- To create an End Product for a client.

You may NOT:

- Share or re-sell this brush pack in part or as a whole.

For other licensing queries or if you want to extend your rights to commercially exploit these digital brushes please contact **Enrique Figueroa** at: contact@frankentoon.com



Thank you!

For supporting the **Frankentoon** Project by purchasing this pack. You're helping us to create **more free content** for our website and **exciting products** for independent illustrators.

Don't forget to save **<http://frankentoonstudio.com>** to your favorites!

Would you be our friend?



@frankentoon



/frankentoon



@frankentoon



youtube.com/FrankentoonVideo